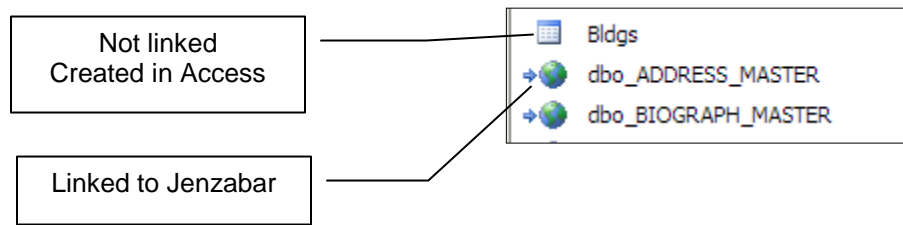


# Link Jenzabar Tables into an Access Database

## Example of Linked Jenzabar tables

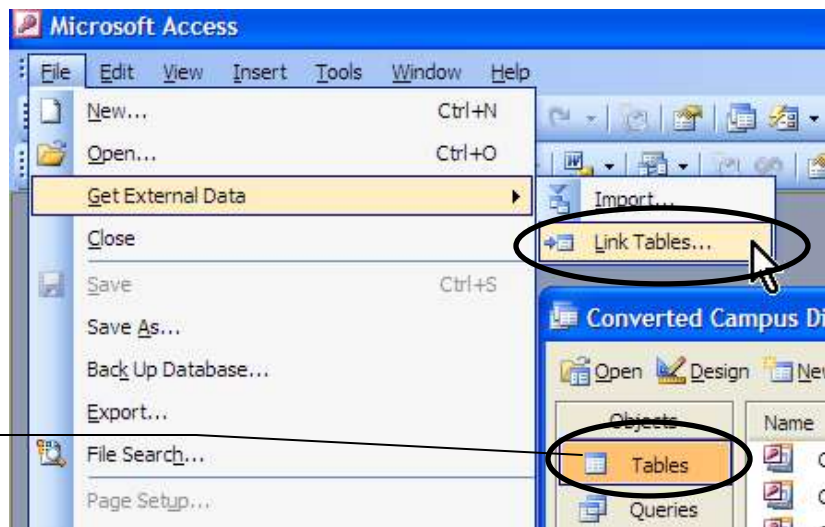


## How to Create the Link

In Access

1. Select the Tables object tab
2. Menu: File, Get External Data Link Tables...

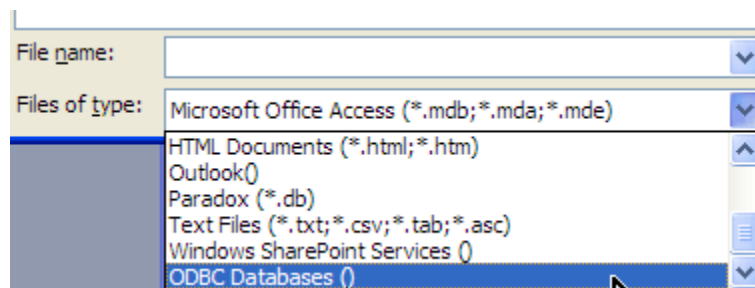
Tables Object tab



The open dialog box automatically appears

## Open dialog box

At the bottom of the dialog box-  
Files of type:  
Select ODBC Databases ()



# Link Jenzabar Tables into an Access Database

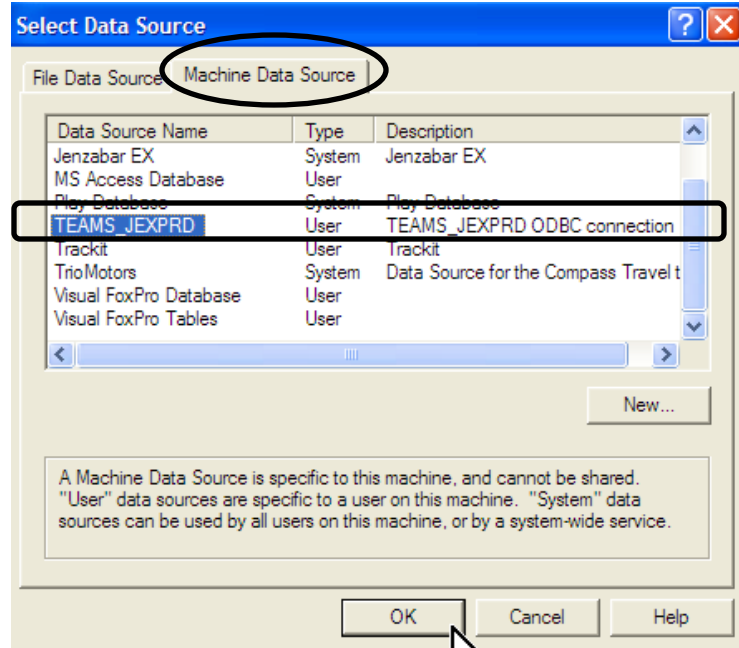
## Data Source dialog box

Select Machine Data Source tab

Select the TEAMS\_JEXPRO data source

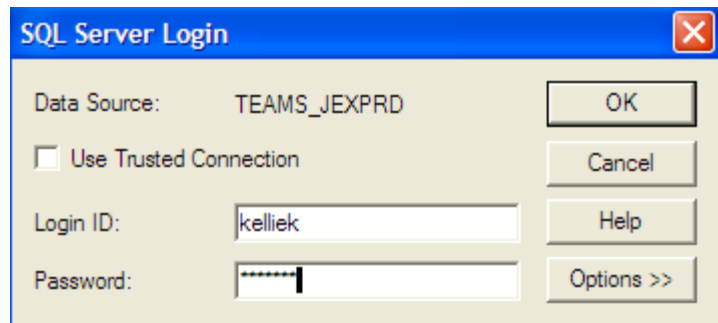
OK

SQL Server Login automatically appears



## Log in to Jenzabar

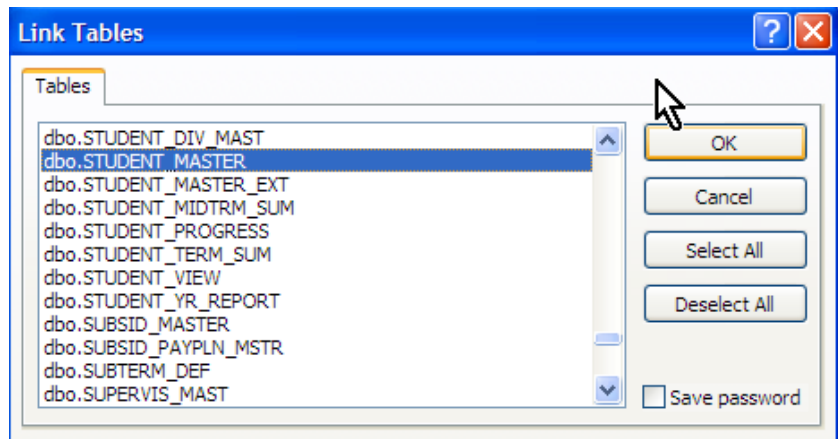
Use the same credentials that you do InfoMaker



## Select the Jenzabar Table

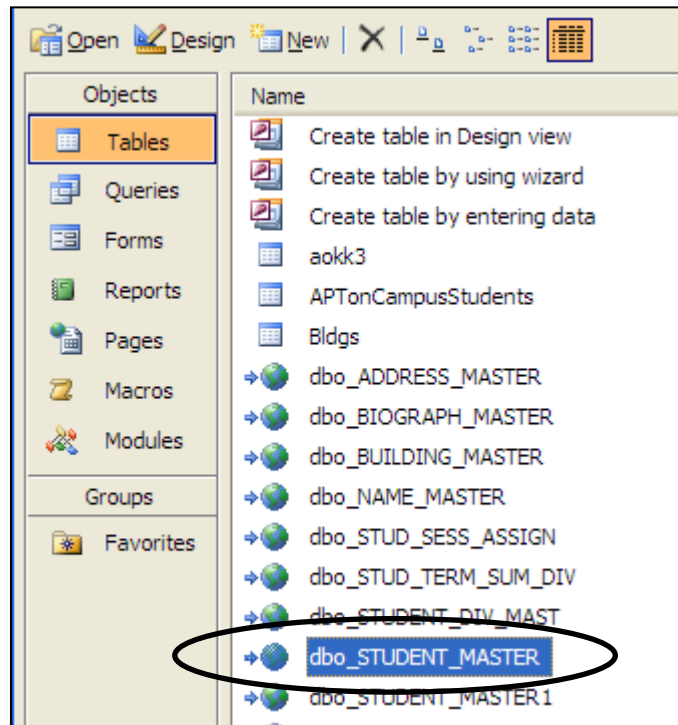
Click to select the table  
OK

Do this for every table you need to link



## Link Jenzabar Tables into an Access Database

*Linked table appears in the Access table window*



### *Use the linked table in a query*

You will select the table the same way you select an Access table

You will create joins in Access

Use queries as is or as a basis of reports

### *Example of Query using Jenzabar tables*

