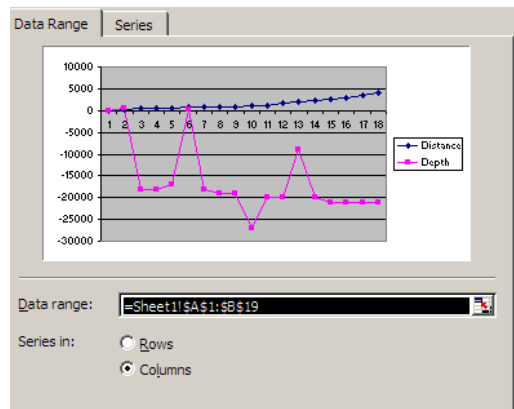


Graphs – Category Axis Labels Appear as 123 Instead of Numbers

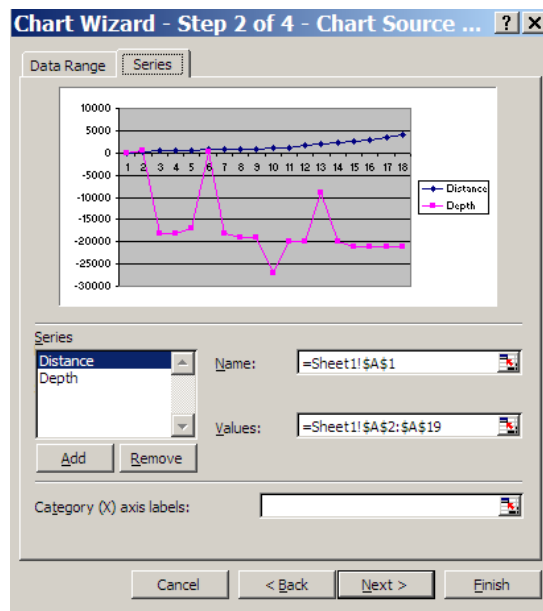
Select the value data and the horizontal axis data

	A	B	C	D
1	Distance	Depth	Time	
2	0	0	0	
3	100	600	0.25	
4	500	-18,000	7.5	
5	600	-18,000	7.5	
6	650	-17,000	7.08	
7	700	100	0	
8	750	-18,000	7.5	
9	800	-19,000	7.92	
10	900	-19,000	7.92	
11	1000	-27,000	11.25	
12	1100	-20,000	8.33	
13	1700	-20,000	8.33	
14	2000	-9,000	3.75	
15	2300	-20,000	8.33	
16	2500	-21,000	8.75	
17	3000	-21,000	8.75	
18	3500	-21,000	8.75	
19	4000	-21,000	8.75	
20				
21				

Make the chart
Click Series tab

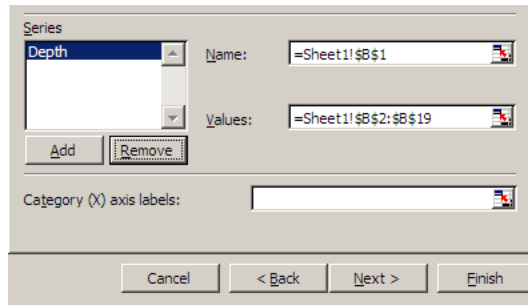


Remove Distance



Click in Category (X) axis

Click red arrow

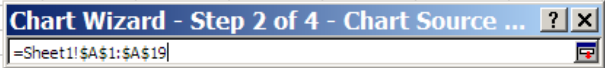


labels:

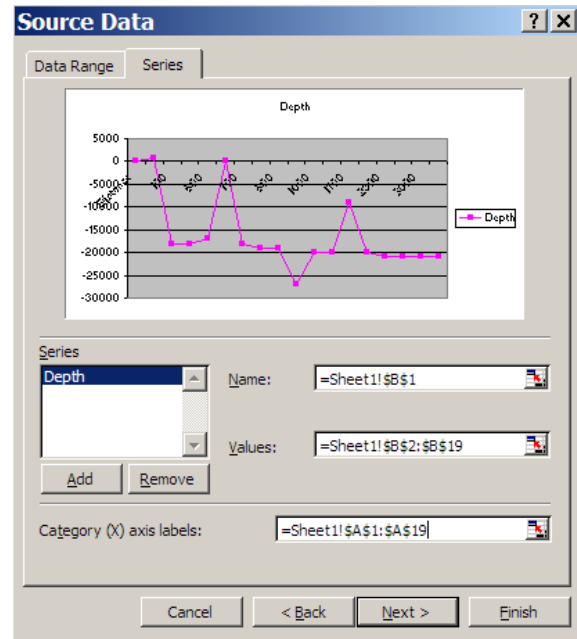
Highlight the Horizontal Axis title and labels (in this case Distance)

Click the red arrow

	A	B	C	D	E	F	G	H	I	J
1	Distance	Depth	Time							
2		0	0							
3		100	600							
4		500	-18,000							
5		600	-18,000	7.5						
6		650	-17,000	7.08						
7		700	100	0						
8		750	-18,000	7.5						
9		800	-19,000	7.92						
10		900	-19,000	7.92						
11		1000	-27,000	11.25						
12		1100	-20,000	8.33						
13		1700	-20,000	8.33						
14		2000	-9,000	3.75						
15		2300	-20,000	8.33						
16		2500	-21,000	8.75						
17		3000	-21,000	8.75						
18		3500	-21,000	8.75						
19		4000	-21,000	8.75						
20										

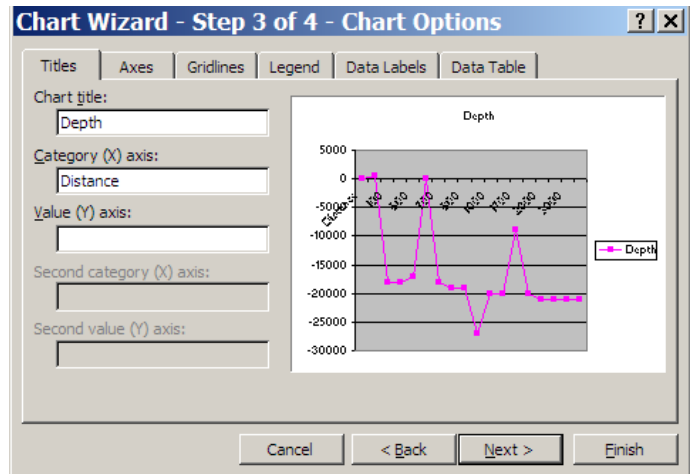


Click Next>

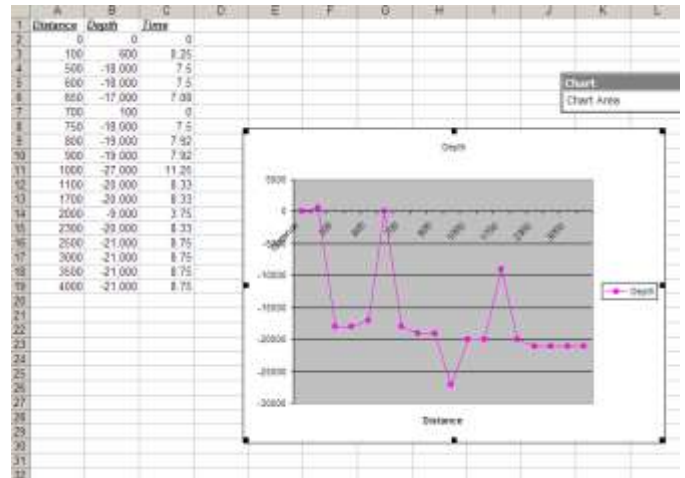


Keep entering info and clicking Next> until the chart is finished

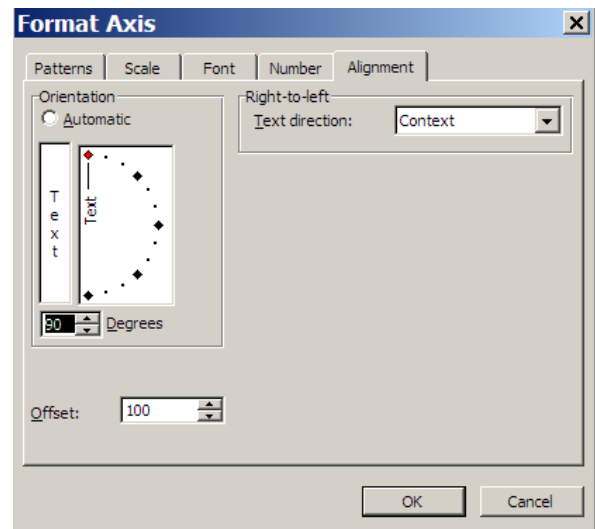
You might want to add the Horizontal Axis title



Completed chart



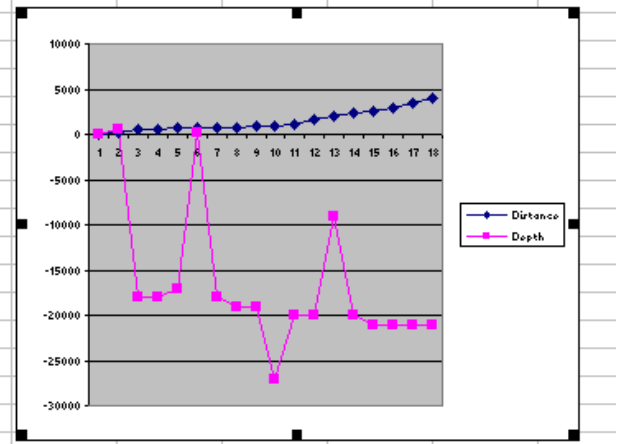
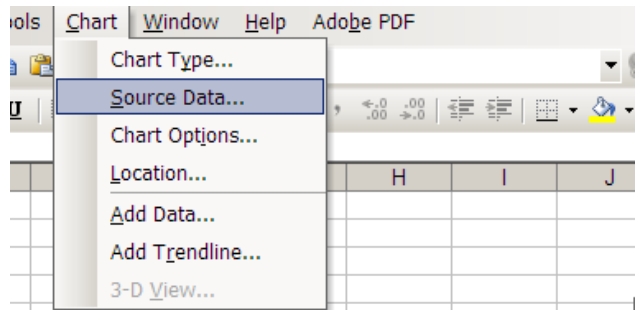
You can change the slant of the Distance numbers by double clicking the axis
Choose the Alignment tab





Change Values to Category labels AFTER the chart is created

- Select the chart
- Click Chart menu
- Click Source Data...



Click Series tab
Follow the yellow highlighted steps
at the beginning of the directions.

(I think it is easier to do this in
Excel 2003!)

