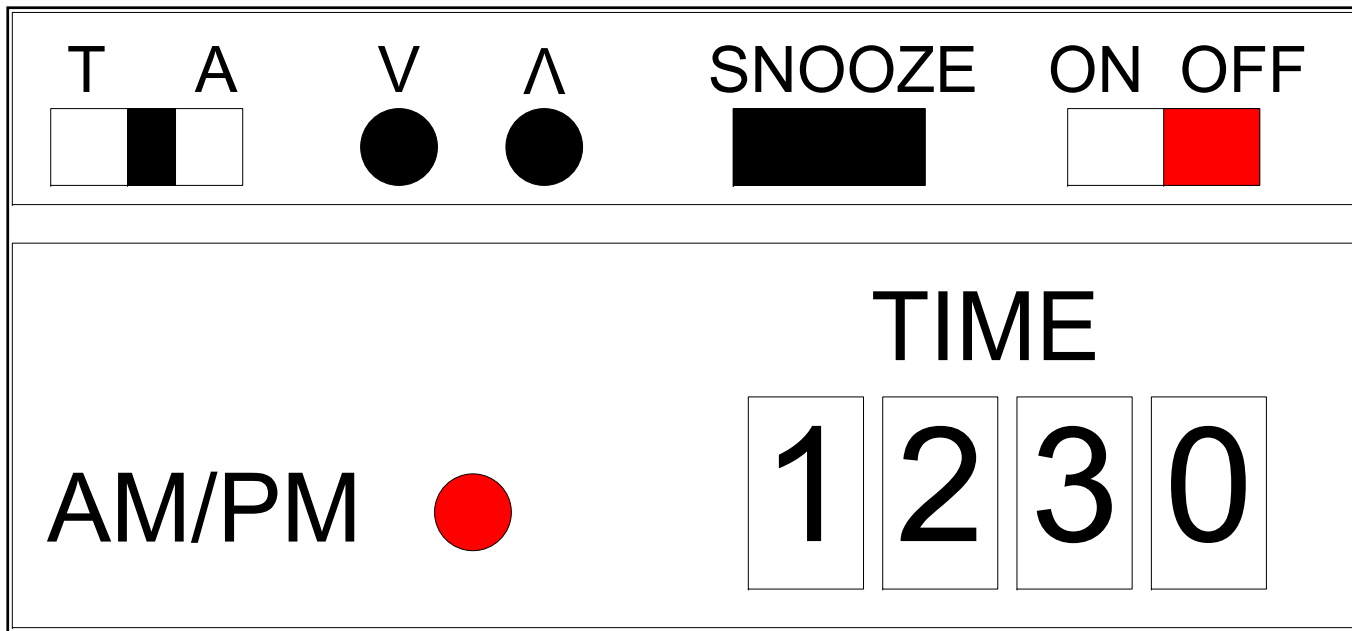
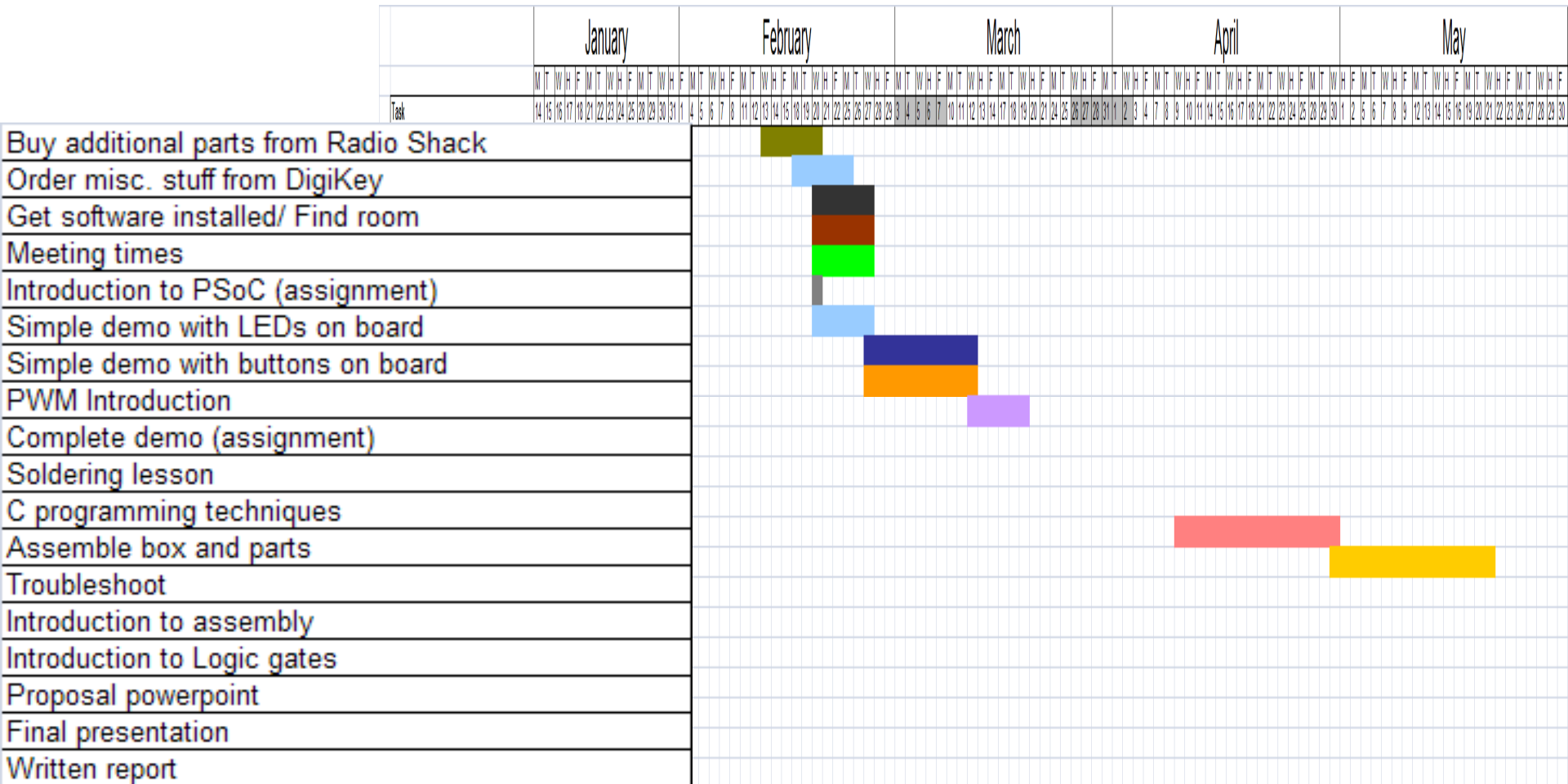


PSoC Alarm Clock

Ramos, Jordan, Coleman, Crouse



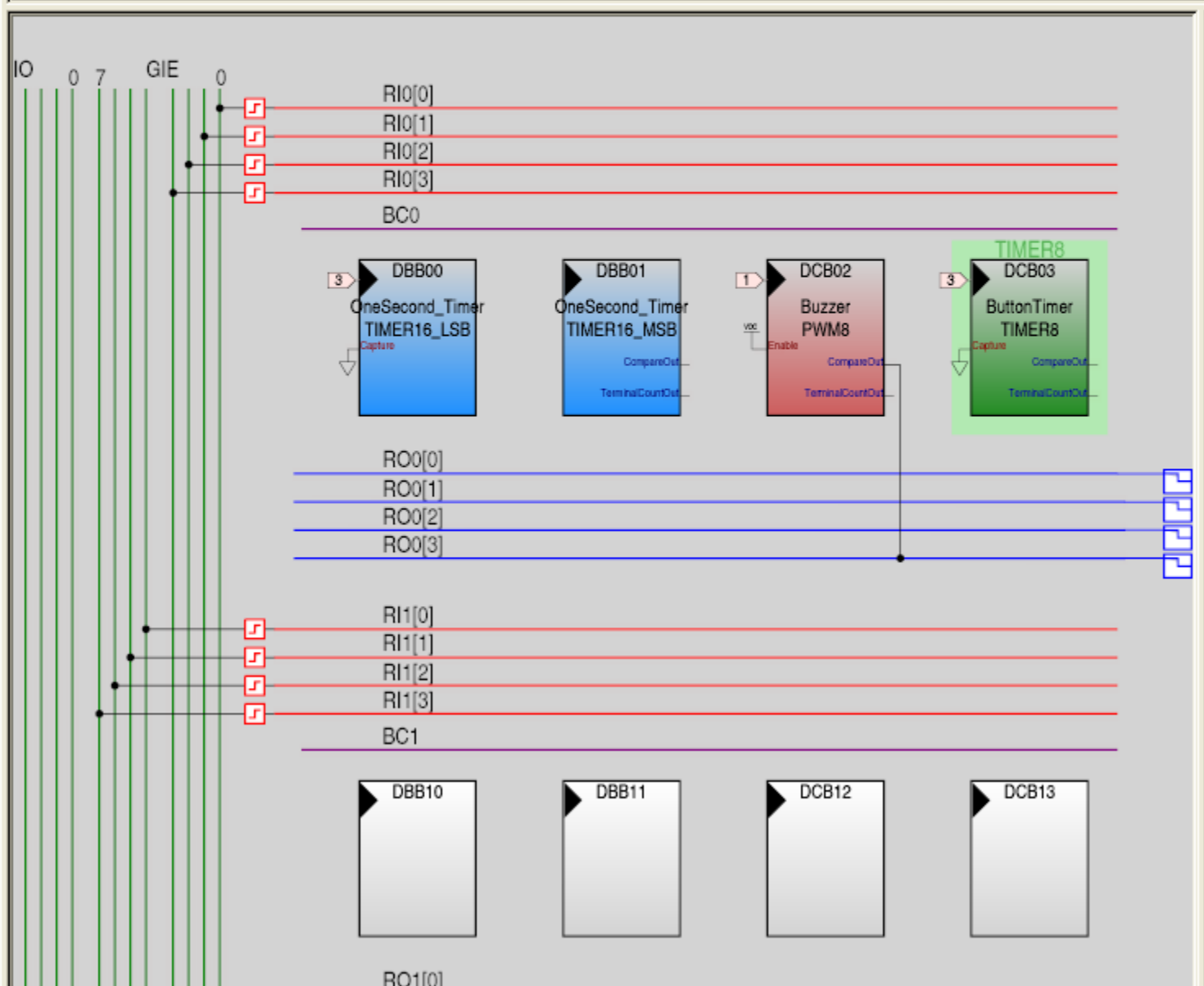


ysClk/8)

4_MHz

an

Select	Drive
StdCPU	Pull D
StdCPU	Pull D
StdCPU	Pull D
StdCPU	Pull D
StdCPU	Pull D
StdCPU	Pull D
StdCPU	Pull D
StdCPU	Strong
GlobalOutEve	Strong
StdCPU	Strong
StdCPU	Strong
StdCPU	Strong
StdCPU	Strong
StdCPU	Strong



Pin_3,7	1702
Pin_3,8	2002
Pin_3,3	3402
Pin_3,1	4701
EqIP	4901
EqP	4902
EqD	1702
EqL	4701
EqM	0801
Pin_1,7	1701
LED_2Pin	1702
EqL	1702
EqM	1701
EqP	1701
EqD	1702

Global Resources	Value
CPU_Clock	3_MHz (SysClk/8)
32K_Select	Internal
PLL_Mode	Disable
Sleep_Timer	512_Hz
VC1= SysClk/N	16
VC2= VC1/N	15
VC3 Source	VC2
VC3 Divider	100
SysClk Source	Internal 24_MHz
SysClk*2 Disable	No

ButtonTimer

User Module Parameters	Value
Clock	VC3
Capture	Low
TerminalCountOut	None
CompareOut	None
Period	10
CompareValue	0
CompareType	Less Than

Name	Port	Select	Drive
Port_0_0	P0[0]	StdCPU	Pull D
Port_0_1	P0[1]	StdCPU	Pull D
Port_0_2	P0[2]	StdCPU	Pull D
Port_0_3	P0[3]	StdCPU	Pull D
Port_0_4	P0[4]	StdCPU	Pull D
Port_0_5	P0[5]	StdCPU	Pull D
LED_1Pin	P0[6]	StdCPU	Strong
Port_0_7	P0[7]	GlobalOutEve	Strong
Dig1	P1[0]	StdCPU	Strong
Dig2	P1[1]	StdCPU	Strong
Dig3	P1[2]	StdCPU	Strong
Dig4	P1[3]	StdCPU	Strong
Dig5	P1[4]	StdCPU	Strong
LED_2Pin	P1[5]	StdCPU	Strong

Selecter



Button

IO 0

IO 0

IO 0

IO 0

IO 0

IO 0

IO 0

IO 0

IO 0

IO 0

IO 0

IO 0

IO 0

IO 0

IO 0

IO 0

IO 0

IO 0

IO 0

IO 0

IO 0

IO 0

IO 0

IO 0

IO 0

IO 0

IO 0

IO 0

IO 0

